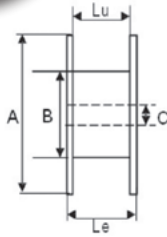
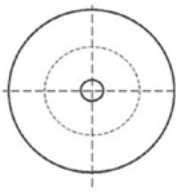


Packaging on drums

Drum dimensions



Cat. T - Drums	Drum reference		Nature of flanges	Diameter A mm	Diameter B mm	Diameter C mm	Le mm	Lu mm	Approximate weight kg
	ODP	ODS							
-	-	T 300	Plywood	300	150	33	216	200	1.1
T 400	T 400	-	Plywood	400	148	31	316	300	2.4
T 400B	-	-	Plywood	400	148	31	216	200	2.1
-	T 400D	-	Plywood	400	208	42	216	200	2.0
-	T 450B	-	Plywood	450	208	42	216	200	2.4
-	T 450	T 450	Plywood	450	208	42	266	250	2.5
T 600	T 600	T 600	Plywood	600	242	83	324	300	5.5
T 600C	-	-	Metal rimmed plywood	600	315	42	330	300	6.8
T 750	T 750	-	Plywood	750	300	83	480	450	11
-	-	T 750DB	Plywood	750	300	83	375	350	8.9
T 900	T 900	-	Wood	900	420	83	526	458	25
T 900C	-	-	Metal rimmed wood	900	420	83	550	450	43
T 1050	T 1050	-	Wood	1 050	530	83	526	458	40
T 1050C	-	-	Metal rimmed wood	1 050	545	83	550	450	60
T 1200	T 1200	-	Wood	1 200	630	83	700	600	60
T 1200C	-	-	Metal rimmed wood	1 200	630	83	700	600	90
T 1400	T 1400	-	Wood	1 400	720	83	712	600	115
T 1400C	-	-	Metal rimmed wood	1 400	720	83	712	600	150
T 1650	T 1650	-	Wood	1 650	720	83	732	600	160
T 1650C	-	-	Metal rimmed wood	1 650	630	83	732	600	210

Theoretical drum capacity according to product diameter

Ref. ODP	T 400	T 400B	T 400D	T 450B	T 450	T 600	T 600C	T 750	T 750DB	T 900	T 900C	T 1050	T 1050C	T 1200	T 1200C	T 1400	T 1400C	T 1650	T 1650C	
Ref. ODS	T 400	-	-	-	-	T 600	-	T 750	-	T 900	-	T 1050	-	T 1200	-	T 1400	-	T 1650	-	
Ref. ODB	-	-	-	-	-	T 600	-	T 750	-	T 900	-	T 1050	-	T 1200	-	T 1400	-	T 1650	-	
Diameter of product (mm)	Maximum cable length on DRUM dispatched* (linear m)																			
2.0	1 930	5 700	3 800	3 050	5 060	6 330	13 400	11 300	31 800	25 430	-	-	-	-	-	-	-	-	-	-
3.0	830	2 500	1 650	1 320	2 200	2 760	6 000	4 910	13 930	11 240	19 310	19 060	25 610	24 490	-	-	-	-	-	-
4.0	480	1 380	920	760	1 260	1 570	3 290	2 760	7 910	6 320	10 790	10 600	14 240	13 630	21 200	21 200	-	-	-	-
5.0	310	900	600	480	790	980	2 080	1 770	5 080	4 090	7 020	6 940	9 250	8 810	13 790	13 790	19 870	19 870	-	-
6.0	190	600	390	310	530	650	1 460	1 220	3 480	2 810	4 730	4 670	6 400	6 010	9 520	9 520	13 680	13 680	22 120	23 330
7.0	150	450	300	220	400	500	1 030	870	2 510	2 060	3 470	3 420	4 610	4 450	6 820	6 820	9 920	9 920	16 060	16 940
8.0	120	340	230	170	310	390	780	680	1 970	1 510	2 630	2 580	3 560	3 400	5 300	5 300	7 690	7 690	12 190	13 120
9.0	90	250	160	130	230	280	620	520	1 540	1 170	2 030	2 030	2 800	2 720	4 190	4 190	6 010	6 010	9 730	10 360
10.0	70	210	140	110	190	240	490	440	1 270	980	1 680	1 680	2 220	2 140	3 350	3 350	4 960	4 960	7 850	8 500
11.0	50	160	110	80	160	190	420	360	1 010	780	1 380	1 350	1 850	1 730	2 760	2 760	3 990	3 990	6 360	6 760
12.0	40	130	80	70	120	160	360	300	820	700	1 130	1 100	1 540	1 430	2 300	2 300	3 420	3 420	5 420	5 830
13.0	40	130	80	50	100	130	310	250	710	540	990	960	1 360	1 250	2 020	2 020	2 870	2 870	4 520	4 930
14.0	30	100	60	50	100	120	250	200	620	490	850	850	1 090	1 110	1 620	1 620	2 370	2 370	3 870	4 090
15.0	30	100	60	50	80	90	220	190	540	410	740	740	960	970	1 450	1 450	2 150	2 150	3 430	3 660
16.0	20	70	40	30	-	90	170	150	460	350	640	640	830	850	1 250	1 250	1 890	1 890	2 920	3 150
17.0	10	70	40	30	-	70	170	140	390	340	550	550	710	730	1 090	1 090	1 690	1 690	2 670	2 900
18.0	10	50	30	30	-	60	130	110	380	290	480	480	700	640	1 040	1 040	1 500	1 500	2 430	2 510
19.0	10	50	30	30	-	50	130	110	310	240	460	440	610	530	900	900	1 320	1 320	2 050	2 280
20.0	10	50	30	20	-	50	110	110	310	240	380	380	510	520	790	790	1 180	1 180	1 900	2 120
21.0	-	-	-	-	-	-	100	80	260	190	370	370	490	440	740	740	1 020	1 020	1 680	1 780
22.0	-	-	-	-	-	-	100	70	250	190	310	310	420	430	640	640	990	990	1 530	1 630
23.0	-	-	-	-	-	-	80	70	200	160	300	300	400	360	630	630	870	870	1 500	1 600
24.0	-	-	-	-	-	-	70	70	200	150	260	250	360	340	530	530	850	850	1 350	1 450
25.0	-	-	-	-	-	-	70	50	200	150	250	250	340	350	520	520	740	740	1 210	1 310
26.0	-	-	-	-	-	-	70	50	160	120	240	240	330	280	500	500	710	710	1 080	1 180
27.0	-	-	-	-	-	-	50	50	150	110	190	190	270	270	420	420	610	610	1 040	1 150
28.0	-	-	-	-	-	-	50	40	150	110	190	190	270	270	400	400	590	590	920	1 020
29.0	-	-	-	-	-	-	50	40	120	110	180	180	250	220	380	380	570	570	890	900
30.0	-	-	-	-	-	-	50	40	120	80	180	180	210	220	330	330	500	500	810	900
31.0	-	-	-	-	-	-	50	30	110	90	140	140	200	210	310	310	480	480	780	800
32.0	-	-	-	-	-	-	30	30	110	80	140	140	200	210	300	300	460	460	670	760
33.0	-	-	-	-	-	-	30	30	100	80	130	130	190	160	300	300	400	400	670	700
34.0	-	-	-	-	-	-	30	20	80	80	130	130	160	160	240	240	380	380	650	670
35.0	-	-	-	-	-	-	30	20	80	60	130	120	160	150	240	240	380	380	580	670
36.0	-	-	-	-	-	-	30	20	80	60	100	100	150	150	230	230	360	360	560	580
37.0	-	-	-	-	-	-	30	20	80	60	100	100	150	150	230	230	310	310	560	580
38.0	-	-	-	-	-	-	30	20	70	60	100	90	150	110	210	210	290	290	470	550
39.0	-	-	-	-	-	-	30	20	70	50	90	90	140	110	210	210	290	290	470	490
40.0	-	-	-	-	-	-	20	20	70	50	90	90	110	110	170	170	290	290	470	490
41.0	-	-	-	-	-	-	20	10	50	50	90	80	110	100	160	160	270	270	440	470
42.0	-	-	-	-	-	-	20	10	50	40	80	80	100	100	160	160	230	230	390	410
43.0	-	-	-	-	-	-	10	10	50	40	80	80	100	100	150	150	210	210	370	390
44.0	-	-	-	-	-	-	10	10	50	30	60	60	100	100	150	150	210	210	370	390
45.0	-	-	-	-	-	-	10	10	50	30	60	60	100	100	150	150	210	210	370	390

ODP: OMERIN division principale // ODS: OMERIN division silsol // ODB: OMERIN division Berne

* Indicative quantity varying according to the flexibility of the core and type of insulation.

Note: All our products supplied on drums are externally protected with a cardboard or plastic film wrapping.

www.omerin.com

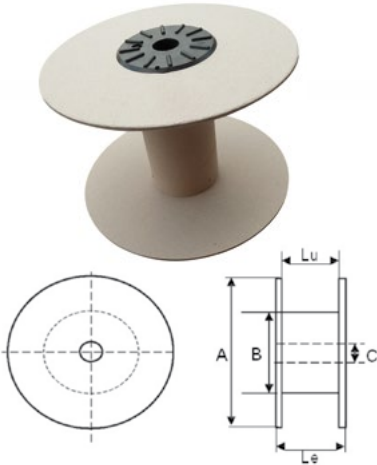


The information provided in this technical data sheet is indicative and may be modified without prior notice, laying, wiring and electrical conditions and the environment of the cable can not be fully considered in our studies. In no way the company OMERIN shall be held responsible for any incidents in the case of inappropriate uses, particularly in the case of wiring conditions that do not respect the good practice and the standards in force.

For an optimum use of the cables produced by our company, we recommend testing in real conditions. Our sales department is available for a possible provision of samples, and/or for the conditions of a complete study in our laboratories.

© Registered trademark of the OMERIN Group. Drawings and photos are not contractual. Reproduction is prohibited without the prior agreement of OMERIN.

Packaging on spools



Spool dimensions

Spool reference			Nature of flanges	Diameter A mm	Diameter B mm	Diameter C mm	Le mm	Lu mm	Approximate weight g
ODP	ODS	ODB							
Cat. T - Spools									
-	-	B 120A	Plastic	120	50	45	40	35	48
-	-	B 120B	Plastic	120	50	45	105	100	58
-	-	B 170A	Plastic	170	67	64	72	68	92
-	-	B 170B	Plastic	170	70	61.1	128	120	152
-	-	B 210	Plastic	225	72	67.5	60	54	192
-	-	B 270	Plastic	270	100	30	140	125	480
B 300	B 300 cardboard	-	Cardboard	300	100	30	210	200	730
B 300-BLA	B 300 plastic	-	Plastic	300	100	30	220	200	720
Cat. D - DIN spools									
D 80	-	-	Plastic	80	50	15	80	65	80
D 100	-	-	Plastic	100	60	15	100	80	125
D 125	-	-	Plastic	125	80	15	125	100	160
D 160	-	-	Plastic	160	100	22	160	123	360
D 200	-	-	Plastic	200	125	22	200	160	630
D 250	-	-	Plastic	250	160	22	197	160	1 050

Theoretical spool capacity according to product diameter

Ref. ODP	D 80	D 100	D 125	D 160	D 200	D 250	-	-	-	-	-	-	B 300 or B 300-BLA
Ref. ODS	-	-	-	-	-	-	-	-	-	-	-	-	B 300 Cardboard or B 300 Plastic
Ref. ODB	-	-	-	-	-	-	B 120A	B 120B	B 170A	B 170B	B 210	B 270	-

Diameter of product (mm)	Maximum cable length on SPOOL* (linear m)												
0.3	1 210	2 820	4 470	9 170	20 890	-	2 620	7 530	11 240	19 510	17 370	-	-
0.4	690	1 570	2 480	5 210	11 710	-	1 480	4 240	6 320	10 910	9 730	-	-
0.5	440	1 020	1 610	3 340	7 590	12 350	950	2 710	4 060	7 020	6 270	-	-
0.6	290	710	1 110	2 290	5 140	8 500	660	1 880	2 780	4 880	4 340	12 860	24 510
0.7	220	510	800	1 660	3 830	6 290	470	1 340	2 050	3 550	3 180	9 420	18 010
0.8	160	380	600	1 300	2 930	4 730	360	1 040	1 580	2 730	2 410	7 150	13 850
0.9	130	300	470	1 010	2 280	3 690	280	830	1 220	2 160	1 920	5 660	10 890
1.0	110	250	400	830	1 860	3 090	240	680	1 000	1 760	1 550	4 640	8 890
1.1	90	200	310	680	1 560	2 470	190	550	820	1 410	1 290	3 800	7 280
1.2	70	170	270	550	1 250	2 120	160	470	680	1 200	1 070	3 180	6 050
1.3	60	140	220	480	1 110	1 750	140	390	580	1 010	910	2 690	5 190
1.4	50	120	190	410	930	1 570	120	330	510	880	790	2 320	4 430
1.5	40	110	180	360	820	1 340	100	300	450	780	680	2 050	3 870
1.6	40	90	150	310	730	1 150	80	250	390	680	580	1 760	3 460
1.7	30	80	120	270	650	1 030	80	220	340	590	530	1 590	3 060
1.8	30	70	120	250	570	920	70	200	290	540	470	1 390	2 720
1.9	30	60	100	220	500	830	60	170	270	470	420	1 250	2 400
2.0	30	60	90	210	440	750	60	170	250	430	380	1 130	2 190
2.1	-	60	90	180	430	670	50	150	230	390	340	1 010	1 980
2.2	-	40	70	170	370	590	40	130	200	350	310	940	1 780
2.3	-	40	70	140	320	570	40	130	190	320	290	850	1 600
2.4	-	40	70	140	310	510	40	110	170	290	260	790	1 510
2.5	-	40	60	130	300	490	40	110	150	280	240	740	1 420
2.6	-	30	50	110	260	430	30	90	140	250	220	660	1 260
2.7	-	30	50	110	250	390	30	90	140	230	210	610	1 190
2.8	-	30	50	100	220	370	30	80	120	220	190	560	1 110
2.9	-	30	50	80	210	360	30	80	120	200	170	520	1 030
3.0	-	30	40	80	210	320	20	70	100	200	170	510	960
3.2	-	-	30	80	170	270	20	60	90	170	140	440	830
3.4	-	-	30	60	160	260	20	50	80	150	130	390	760
3.6	-	-	30	60	130	220	20	50	70	130	110	330	650
3.8	-	-	-	50	130	210	10	40	60	110	100	300	590
4.0	-	-	-	50	100	170	10	40	60	110	90	270	550
4.2	-	-	-	40	100	170	10	40	60	90	80	240	490
4.4	-	-	-	40	90	140	10	30	50	90	80	240	440
4.6	-	-	-	30	70	130	10	30	40	70	70	210	400
4.8	-	-	-	30	70	130	10	30	40	70	60	190	360
5.0	-	-	-	30	70	120	10	30	40	70	60	190	360
5.5	-	-	-	-	60	90	10	20	30	50	50	140	280
6.0	-	-	-	-	40	70	10	20	20	40	40	120	240
6.5	-	-	-	-	40	70	-	10	20	30	40	100	200
7.0	-	-	-	-	30	60	-	10	20	30	30	80	170
7.5	-	-	-	-	30	50	-	10	20	30	20	80	150
8.0	-	-	-	-	30	40	-	10	10	20	20	70	130
8.5	-	-	-	-	-	40	-	10	10	20	20	50	120
9.0	-	-	-	-	-	30	-	10	10	20	20	50	100
9.5	-	-	-	-	-	30	-	10	10	10	10	40	80
10.0	-	-	-	-	-	30	-	10	10	10	10	40	80

ODP: OMERIN division principale
ODS: OMERIN division silsol
ODB: OMERIN division Berne

* Indicative quantity varying according to the flexibility of the core and type of insulation.
Note: All our products supplied on spools are externally protected with a cardboard or plastic film band.

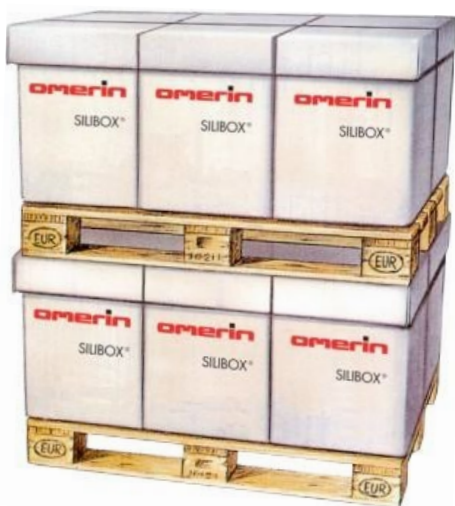
www.omerin.com

omerin
LES CABLES DE L'EXTREME

The information provided in this technical data sheet is indicative and may be modified without prior notice, laying, wiring and electrical conditions and the environment of the cable can not be fully considered in our studies. In no way the company OMERIN shall be held responsible for any incidents in the case of inappropriate uses, particularly in the case of wiring conditions that do not respect the good practice and the standards in force.
For an optimum use of the cables produced by our company, we recommend testing in real conditions. Our sales department is available for a possible provision of samples, and/or for the conditions of a complete study in our laboratories.

© Registered trademark of the OMERIN Group. Drawings and photos are not contractual. Reproduction is prohibited without the prior agreement of OMERIN.

Packaging in SILIBOX®



Benefits of SILIBOX® packaging

- Recyclable disposable packaging on Euro Pallets (1200 x 800 mm) developed by OMERIN SAS.
- No deposits or returns.
- Reduced packaging waste.
- Easier handling.
- Reusable or recyclable boxes, practical and ecological.
- Reduced dimensions and storage costs.
- No costly or complicated unwinding system required: a simple return system positioned approx. 1.50 m above the box enables the cable to be pulled at high speed without breaking, entanglement and twisting.

*Independent boxes, individual lids and labels,
individual handling grips.*



Box dimensions:
400 mm x 400 mm. Height 500 mm

Theoretical capacity of SILIBOX® according to cable diameter

Product diameter mm	Maximum length of product on SILIBOX® m
1.0 to 1.2	8 000 to 6 500
1.2 to 1.5	6 500 to 5 500
1.5 to 1.7	5 500 to 5 000
1.7 to 1.9	5 000 to 4 400
1.9 to 2.1	4 400 to 3 600
2.1 to 2.3	3 600 to 3 200
2.3 to 2.6	3 200 to 2 500
2.6 to 3.0	2 500 to 2 000
3.0 to 4.0	2 000 to 1 000
> 4.0	< 1000

Note: These quantities are likely to vary in significant proportions according to the rigidity of the cable, the nature of the insulation, etc.

The following references do not allow silibox packaging:

- Wire with cross section bigger than 2.5 mm².
- Wire with diameter above 5 mm or below 1 mm.
- Reference with silicone varnished braid (ex CSV, VS, NVS).
- Reference with thick silicone insulation (type CSVRI-HT, style 3304).
- Reference with PTFE tape insulation (ex KZ, EE...).
- Wire with solid core (class 1) and extra-flexible core (class 6).

www.omerin.com

Other packaging options

Rolls



Certain products (e.g. electric wires, sleeveings, etc.) can be delivered in rolls (see illustration).

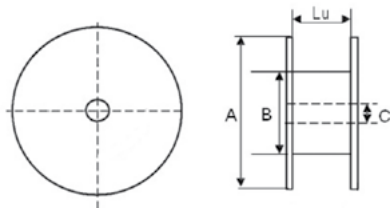
A roll features winding of product (wire or sleeveing), with or without cardboard support. The product is maintained by adhesive tapes or stretchable film.

Some sleeveings can be supplied in kit spool form. The flanges are made of cardboard and metal. Several spool dimensions are available (see illustration and table below).

Spool kit



Some sleeveings can be supplied in kit spool form. The flanges are made of cardboard and metal. Several spool dimensions are available (see illustration and table below).



Ref. ODP	Ø A (mm)	Ø B (mm)	Ø C (mm)	Lu (mm)
B180/100	180	82	30	100
B180/150	180	82	30	150
B300/100	300	82	30	100
B300/150	300	82	30	150
B300/200	300	82	30	200

Instruction for transport, handling and storage

General rules

For storage, transport and when handling, loading and unloading, care must be taken for not damaging the product or its packing, and so as not to alter its future use.

Upon reception, a visual control of the product and its packaging must be carried out, in order to make sure that everything is OK.

Storage guidelines

For a good preservation of our products, they have to be stored as a general standard:

- In their original packing
- Protected from rain, in a dry place, with no risk of excessive humidity
- Protected from direct sun rays
- At temperatures from -10°C up to + 40°C
- Sheltered from shocks and other risks (clean and flat floor, sufficient spacing between the reels, ...)
- Do not stack the reels, store them vertically (horizontal axis)
- It is recommended to store the spools of wire vertically (horizontal axis).

Specific instructions for reels and drums with flanges of diameter of 750 mm and more

Reels must be transported vertically, hold in place so as not to collide into each other. The impact could damage the outer sheathing of the cables. Transport of such size reels with flanges in a horizontal position is prohibited.

Unloading and handling will be done with lifting machines. If a forklift truck is used, the lifting will be done with a beam going through the central axis of the reel, or with the forks. In the later case, place both forks on both sides of the reel, and make sure that both flanges of the reel are onto the forks. At no time the forks must touch the cable.

In the case of a lifting machine, the lifting will be done with a beam and a sling which length will be long enough so the strength applied on the flanges of the reel will not be too important. The strength can be limited by the use of a lifting beam. At no time the lifting machine must touch the cable.

All these conditions are indicatives and non exhaustives.